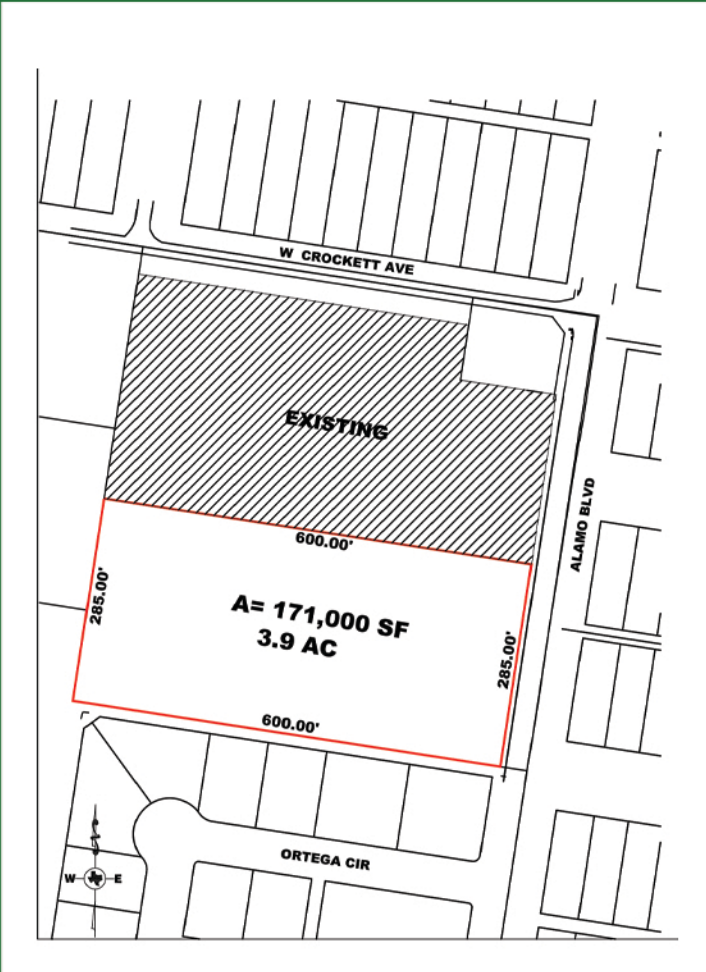


LAND FOR SALE

3.9 Acre Tract
Zoned Commercial
501 S. Alamo
Alamo, TX

OWNER FINANCING
AVAILABLE



ABOUT THE PROPERTY

This property is located on S. Alamo Road, beside the Storage Depot. You will appreciate the great potential for development. 285 feet of frontage on S. Alamo.

QUICK FACTS

- Lot Size - 3.9 Acres
- Utilities Available
- Zoned Commercial
- Near Schools & Medical Facilities
- Near Walmart Super Center

